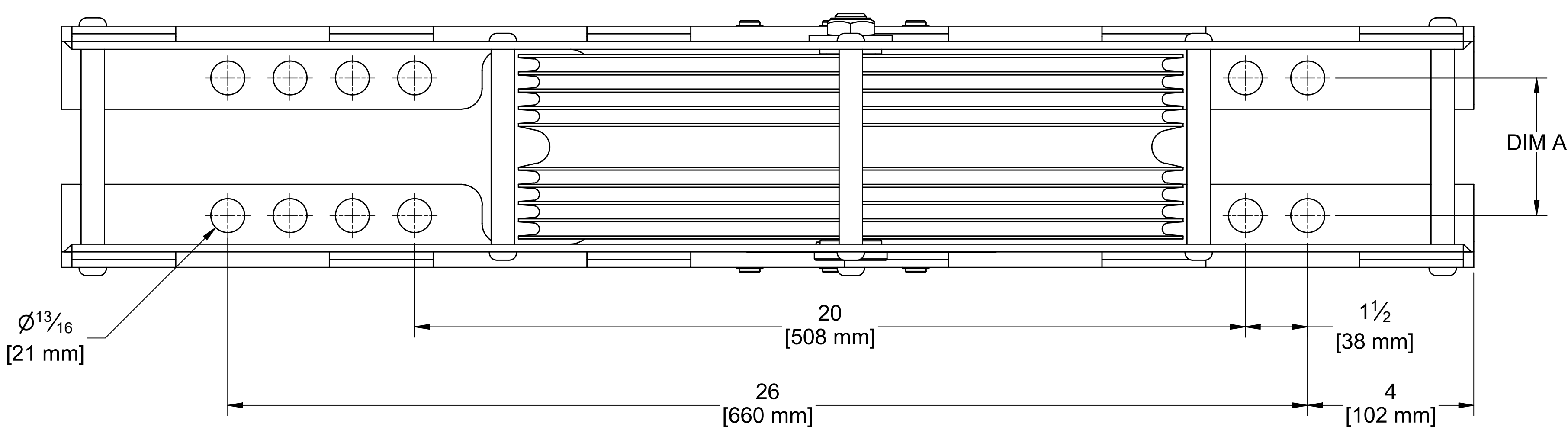
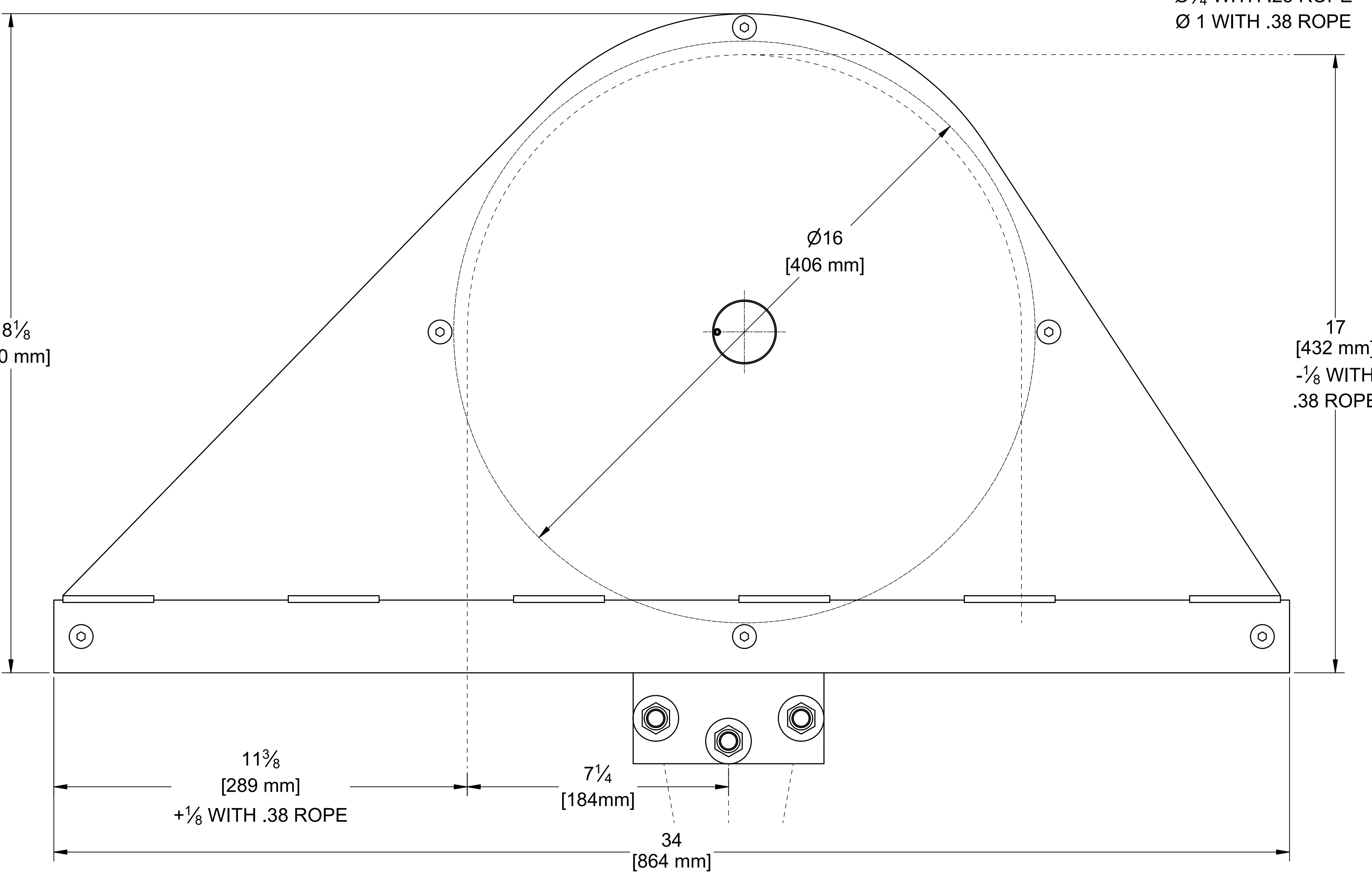


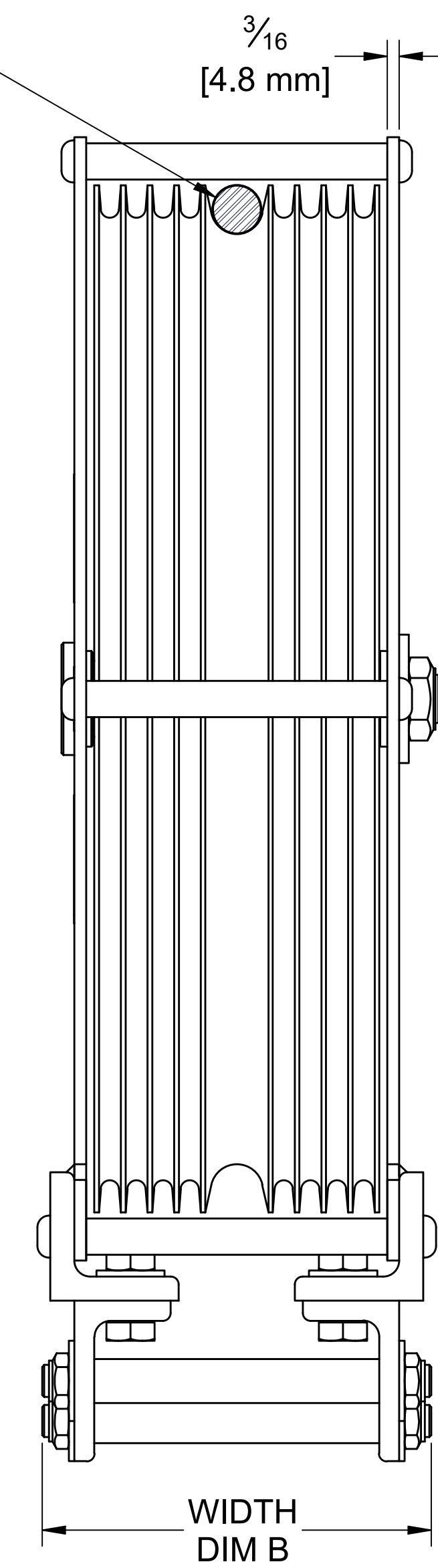
8 | 7 | 6 | 5 | 4 | 3 | 2 | 1



MODEL	CAPACITY	DIM A	DIM B	WEIGHT
HB16-R6N25DP	2500 LBS	2.44 [62mm]	5.34 [136mm]	101.38 LBS
HB16-R8N25DP	2500 LBS	3.31 [84mm]	6.21 [158mm]	108.67 LBS
HB16-R10N25DP	2500 LBS	4.19 [107mm]	7.09 [180mm]	115.99 LBS
HB16-R6S25DP	2500 LBS	2.44 [62mm]	5.34 [136mm]	133.23 LBS
HB16-R8S25DP	2500 LBS	3.31 [84mm]	6.21 [158mm]	145.69 LBS
HB16-R10S25DP	2500 LBS	4.19 [107mm]	7.09 [180mm]	158.19 LBS
HB16-R6N38DP	2500 LBS	3.75 [95mm]	6.65 [169mm]	110.29 LBS
HB16-R8N38DP	2500 LBS	4.88 [124mm]	7.77 [198mm]	118.00 LBS
HB16-R6S38DP	2500 LBS	3.75 [95mm]	6.65 [169mm]	140.86 LBS
HB16-R8S38DP	2500 LBS	4.88 [124mm]	7.77 [198mm]	153.11 LBS



PURCHASE LINE
 $\text{Ø}3/4$ WITH .25 ROPE
 $\text{Ø}1$ WITH .38 ROPE



- NOTES:
- MAXIMUM RATED CAPACITY :
 - MAY EXCEED CAPACITY OF THE ROPE.
 - USE ROPE MANUFACTURER'S RATING AND SAFETY FACTOR TO DETERMINE LOAD LIMIT.
 - WHEN PROPERLY INSTALLED, MAINTAINED AND OPERATED.
 - IS BASED ON CABLES WRAPPED 90 DEGREES AROUND THE SHEAVE.
 - MOUNTING HARDWARE MUST BE DISTRIBUTED EVENLY.
 - MINIMUM OF 4 ATTACHMENT POINTS.
 - CONTACT FACTORY FOR NON-STANDARD REQUIREMENTS.

H - HEAD
 B - BLOCK
 # - SHEAVE DIAMETER
 -
 R - UPRIGHT MOUNTING
 # - NUMBER OF GROOVES
 N - SHEAVE MATERIAL (N=NYLATRON, S=STEEL)
 # - ROPE SIZE (LIFT LINE)
 D - DOUBLE
 P - PURCHASE

DRAWINGS FOR PRODUCTION APPROVAL. MANUFACTURE WILL NOT BEGIN UNTIL APPROVED DRAWING IS RETURNED TO THERN INC.		COMPANY NAME _____ PRINT NAME _____ SIGNATURE _____ DATE _____	
DIMENSIONAL DRAWING		RETURN TO: THERN INC. 5712 INDUSTRIAL PARK ROAD WINONA, MN 55987 PHONE 1-507-454-2996 FAX 1-507-454-5292	
MODEL 16" HEAD BLOCK UPRT DP	FINISH	SCALE NTS	DATE 11/3/2015
THIS PRINT IS THE PROPERTY OF THERN, INC. AND MUST NOT BE REPRODUCED EITHER IN FULL OR IN PART WITHOUT WRITTEN APPROVAL BY THERN, INC.		WEIGHT SEE TABLE	PART NO. D4551
TOLERANCES UNLESS OTHERWISE SPECIFIED FRAC. ± 1" ANG. ± 5" DO NOT SCALE DRAWING		DRAWN BY JCA	SHEET OF 3

8 | 7 | 6 | 5 | 4 | 3 | 2 | 1