

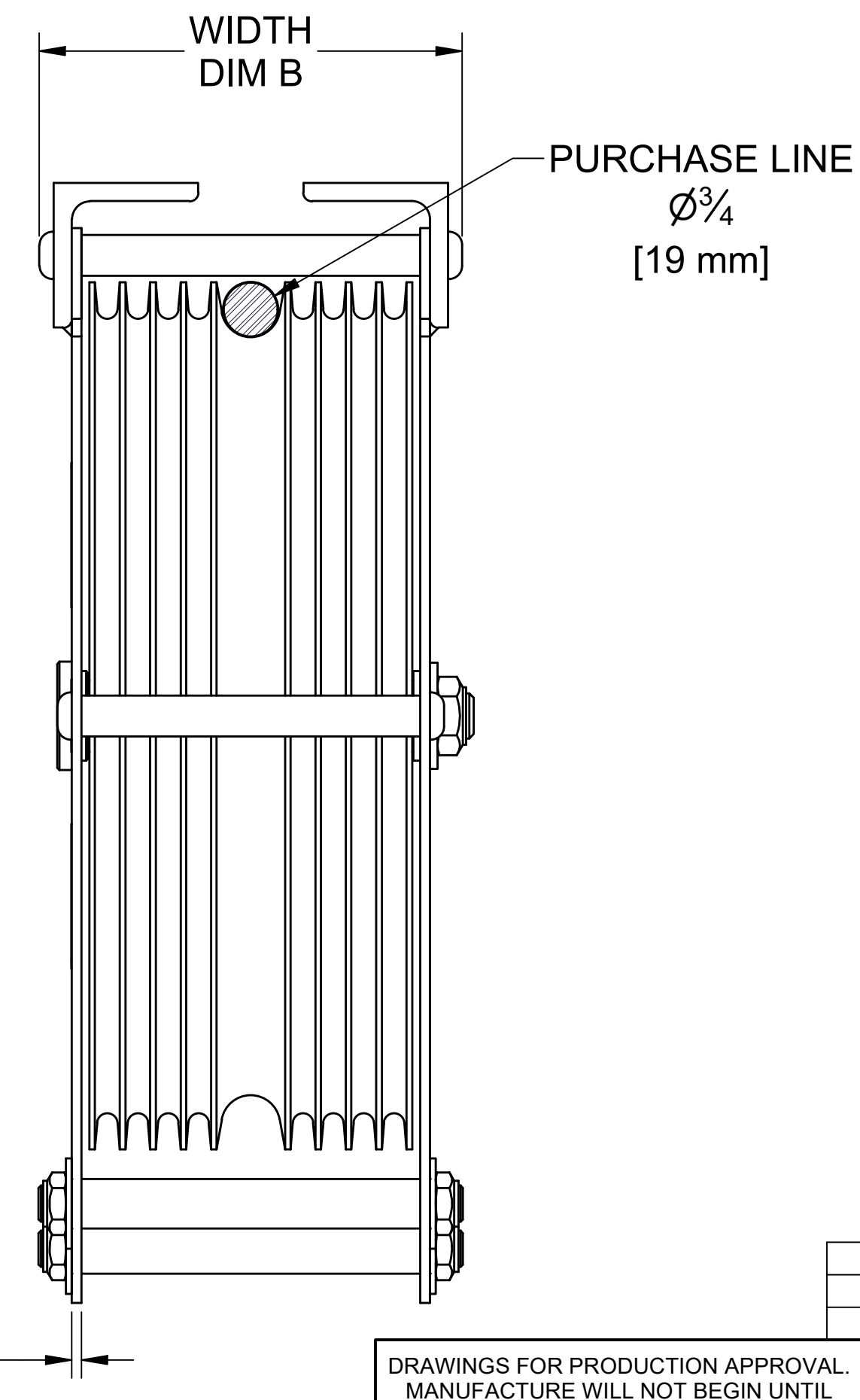
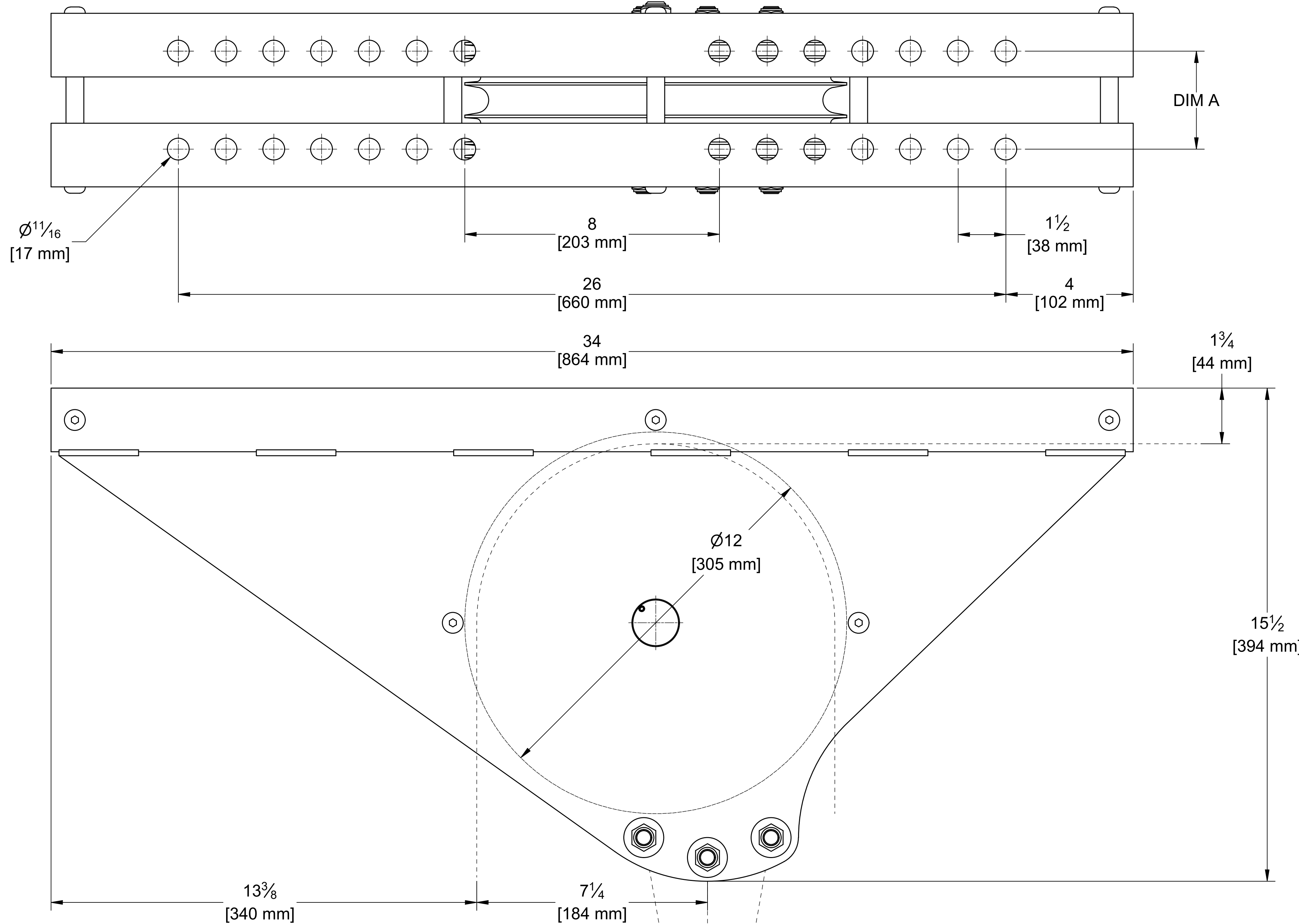
8 7 6 5 4 3 2 1

H - HEAD  
 B - BLOCK  
 # - SHEAVE DIAMETER  
 -  
 D - UNDERHUNG MOUNTING  
 # - NUMBER OF GROOVES  
 N - SHEAVE MATERIAL (N=NYLATRON, S=STEEL)  
 # - ROPE SIZE (LIFT LINE)  
 D - DOUBLE  
 P - PURCHASE

| MODEL         | CAPACITY | DIM A        | DIM B        | WEIGHT    |
|---------------|----------|--------------|--------------|-----------|
| HB12-D6N25DP  | 2000 LBS | 2.21 [ 56mm] | 5.00 [127mm] | 58.86 LBS |
| HB12-D8N25DP  | 2000 LBS | 3.08 [ 78mm] | 5.88 [150mm] | 63.09 LBS |
| HB12-D10N25DP | 2000 LBS | 3.96 [101mm] | 6.75 [172mm] | 67.26 LBS |
| HB12-D6S25DP  | 2000 LBS | 2.21 [ 56mm] | 5.00 [127mm] | 76.13 LBS |
| HB12-D8S25DP  | 2000 LBS | 3.08 [ 78mm] | 5.88 [150mm] | 83.61 LBS |
| HB12-D10S25DP | 2000 LBS | 3.96 [101mm] | 6.75 [172mm] | 90.97 LBS |

NOTES:

- MAXIMUM RATED CAPACITY :  
 - MAY EXCEED CAPACITY OF THE ROPE.  
 USE ROPE MANUFACTURER'S RATING AND SAFETY FACTOR TO DETERMINE LOAD LIMIT.  
 - WHEN PROPERLY INSTALLED, MAINTAINED AND OPERATED.  
 - IS BASED ON CABLES WRAPPED 90 DEGREES AROUND THE SHEAVE.
- MOUNTING HARDWARE MUST BE DISTRIBUTED EVENLY.  
 - MINIMUM OF 4 ATTACHMENT POINTS.
- CONTACT FACTORY FOR NON-STANDARD REQUIREMENTS.



10 GA.  
 [3.4 mm]

| ZONE | REV | AUTHOR     | DATE           | DESCRIPTION |
|------|-----|------------|----------------|-------------|
| A    | JCA | 11/02/2021 | SEE ECN #15021 |             |

DRAWINGS FOR PRODUCTION APPROVAL. MANUFACTURE WILL NOT BEGIN UNTIL APPROVED DRAWING IS RETURNED TO THERN INC.

COMPANY NAME \_\_\_\_\_  
 PRINT NAME \_\_\_\_\_  
 SIGNATURE \_\_\_\_\_ DATE \_\_\_\_\_

THIS PRINT AND THE INFORMATION HEREIN IS THE PROPERTY OF THERN INC AND MUST NOT BE REPRODUCED EITHER IN FULL OR IN PART WITHOUT WRITTEN APPROVAL BY THERN INC.

MODEL: 12" HEAD BLOCK UNDR DP  
 SCALE: 1/2  
 DATE: 10/28/2015  
 DRAWN BY: JCA

INCH UNITS UNLESS OTHERWISE SPECIFIED. TOLERANCES UNLESS SPECIFIED: FRAC: ± 1" ANGLE: ± 9'

THIRD ANGLE PROJECTION

DESCRIPTION: DIMENSIONAL DRAWING  
 SHEET NO: D  
 PART NO: D4524  
 REVISION: A  
 SHEET 1 OF 2

Thern Winches & Cranes  
 5712 INDUSTRIAL PARK ROAD  
 WINONA, MN 55987  
 PHONE 1-507-454-2996  
 WWW.THERN.COM

8 7 6 5 4 3 2 1