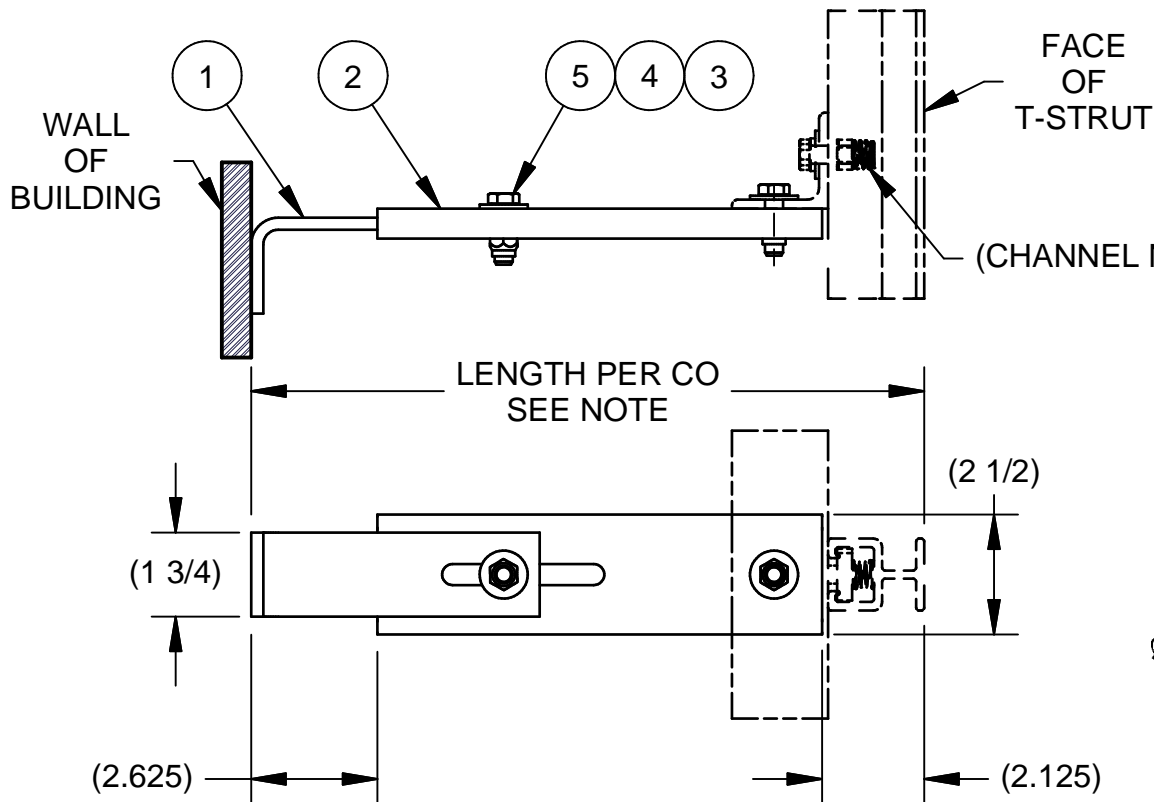
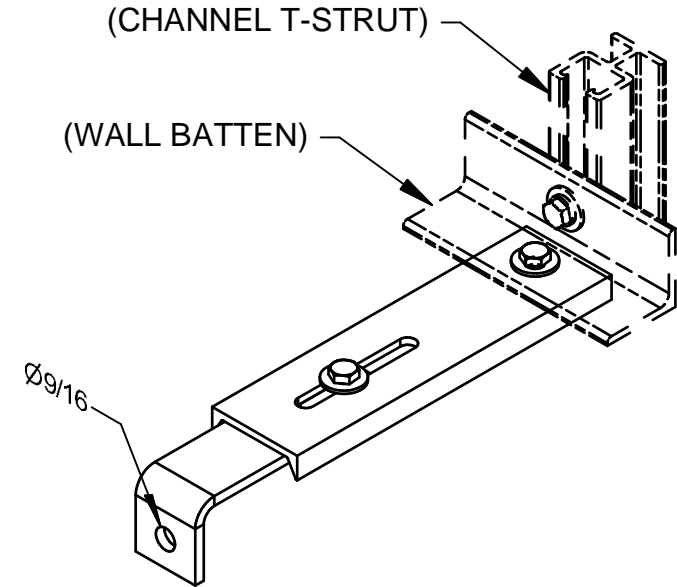


PART NO	ITEM	PART NO	QTY	DESCRIPTION	MATL	WEIGHT
A12002	1	SA8614	1	WALL MOUNT .25 X 1.75 FLAT	Steel, ASTM A36	.88
	2	A12003	1	CHANNEL 2.500 X .625 X .187 X PER FORMULA	Steel, ASTM A36	
	3	A3114	4	WASHER FLT USS .375 X 1.000 X .083 ZNPL	ZNPL Washer	.01
	4	A3113	2	NUT HEX NYLK .375-16NC ZNPL GR5	FASTENER - NUT J995 GR 5	.02
	5	A3112	2	CAPSCR HEXHD .375-16NC X 1.250 ZNPL GR5	ZNPL GR5	.06



NOTE:
 PER CO = WALL TO FACE OF T-STRUT
 FORMULA PER CO = LINE SPEC - 4.75"

CHANNEL WEIGHT = .19 LBS PER INCH
 WEIGHT OF OTHER COMPONENTS = 1.08 LBS



FORMULA $2.625" + 2.125" = 4.75"$
 EXAMPLE $1'-2" - 4.75" = 9.25"$
 CHANNEL CUT LENGTH IS 9.25"

REV.	DATE	ECN BY	DESCRIPTION	REVISION

TOLERANCES UNLESS OTHERWISE SPECIFIED
 .X ± .050
 .XX ± .030
 .XXX ± .010
 FRAC. ± 1/16
 ANG. ± 1°
 FINISHED HOLES
 FRAC. ± 1/32
 REMOVE ALL BURRS
 DO NOT SCALE DRAWING

DESCRIPTION ASSEMBLY WALL BATTEN KNEE MOUNT PER CO		FINISH	
MODEL		TREAT	
THIS PRINT IS THE PROPERTY OF THERN, INC. AND MUST NOT BE REPRODUCED EITHER IN FULL OR IN PART WITHOUT WRITTEN APPROVAL BY THERN, INC.		WEIGHT VARIABLES	SCALE 1=4
		DRAWN BY JRW	DATE 10/2/2012



THERN INC
 5712 INDUSTRIAL PARK ROAD
 P.O. BOX 347
 WINONA, MN 55987
 PHONE 1-507-454-2996
 FAX 1-507-454-5282

PART NO A12002	SHEET 1 OF 1
--------------------------	--------------------