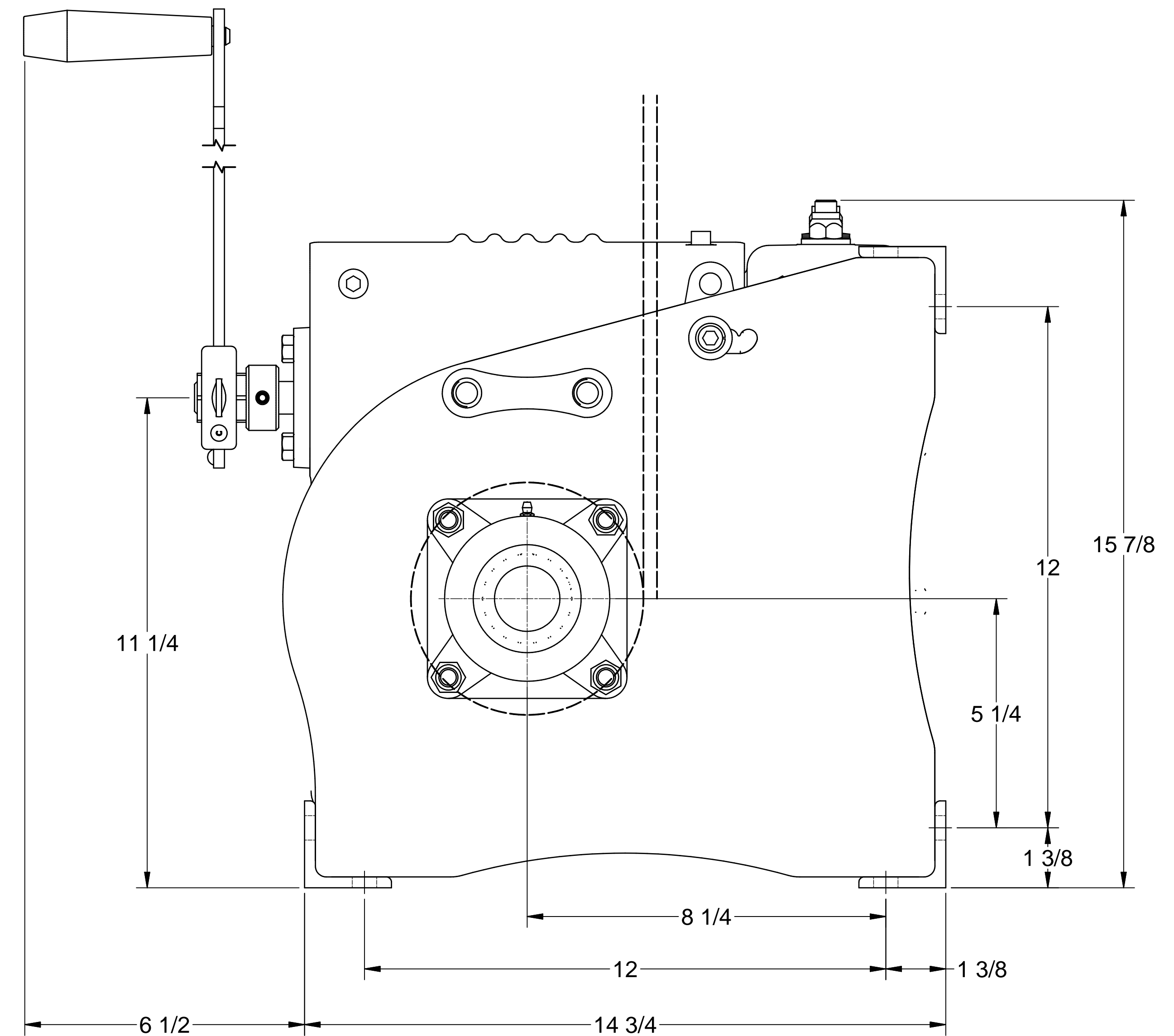


FRONT VIEW



SIDE VIEW

	CW25-2M
WORKING LOAD LIMIT	2500 LBS
DRILL-DRIVE LOAD LIMIT *	1800 LBS
GEAR RATIO	31 : 1
NUMBER OF HAUL LINES	2
WIRE ROPE (GROOVE) SIZE	Ø 5/16"
MAXIMUM TRAVEL **	40 FT
D : d RATIO	18.5
TYPICAL HANDLE EFFORT	37 LBS
FAIL SAFE BRAKE	STANDARD
DESIGN FACTOR	8 : 1
WEIGHT	155 LBS

\* DRILL-DRIVE OPERATION BASED ON DRILL RATED FOR 11.5 AMPS AT 300 RPM.  
 LOAD RATING IS 1800 LB IF OPERATED WITH A DRILL RATED FOR 10 AMPS AT 250 RPM.  
 LOAD RATING IS 1200 LB IF OPERATED WITH A DRILL RATED FOR 10 AMPS AT 350 RPM.

\*\* GREATER TRAVEL POSSIBLE AT REDUCED LOAD RATINGS, CONTACT FACTORY.

**NOTES:**

1. USE STANDARD STOP SLEEVES OR SWAGED BALL ENDS TO ANCHOR WIRE ROPE.
2. KEEP FOUR (4) WRAPS OF WIRE ROPE WOUND ON DRUM AT ALL TIMES TO SERVE AS ANCHOR WRAPS.
3. INSTALL SUPPLIED BREATHER PLUG AFTER INSTALLATION. SEE OWNERS MANUAL FOR DETAILS.
4. CONTACT FACTORY FOR NON-STANDARD REQUIREMENTS.

NOT FOR CONSTRUCTION

THIS PRINT IS THE PROPERTY OF THERN AND MUST NOT BE REPRODUCED EITHER IN FULL OR IN PART WITHOUT WRITTEN APPROVAL BY THERN.		<b>TSE THERN STAGE EQUIPMENT</b>		5712 INDUSTRIAL PARK ROAD WINONA, MN 55987 PHONE 1-800-553-2204 FAX 1-507-454-5282	
DESCRIPTION <b>MANUAL CLEW WINCH</b>				TOLERANCES UNLESS SPECIFIED FRAC. ± 1" ANGLE ± 5" DO NOT SCALE DRAWING	
MODEL <b>CW25 SEREIS</b>				DRAWING NUMBER <b>D3455</b>	
DRAWN BY JCA	DATE 10/8/2009	WEIGHT N/A	SCALE NTS	REVISION A	SHEET 1 OF 1