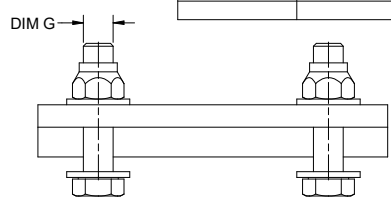
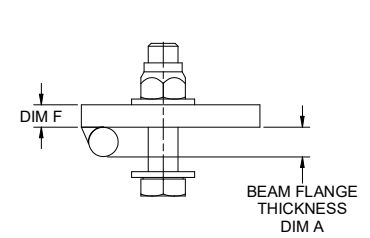
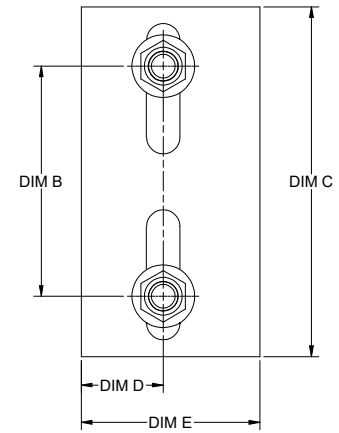


* TOTAL WEIGHT PER PAIR.

C - CLIP
 K - KIT
 # - BOLT DIAMETER
 -
 # - CLIP SIZE (DIM C)
 T - THICKNESS
 # - BEAM FLANGE THICKNESS



MODEL	DIM A	DIM B	DIM C	DIM D	DIM E	DIM F	DIM G	* WEIGHT
CK50-6T025	0.19-0.25 [4.8 - 6.4mm]	1.50-4.75 [38-120mm]	5.88 [150mm]	1.38 [35mm]	3.00 [76mm]	0.38 [9.5mm]	1/2-13 UNC	4.38 LBS
CK50-6T038	0.26-0.38 [6.5 - 9.6mm]	1.50-4.75 [38-120mm]	5.88 [150mm]	1.38 [35mm]	3.00 [76mm]	0.38 [9.5mm]	1/2-13 UNC	4.60 LBS
CK50-6T050	0.39-0.50 [9.7-12.7mm]	1.50-4.75 [38-120mm]	5.88 [150mm]	1.38 [35mm]	3.00 [76mm]	0.38 [9.5mm]	1/2-13 UNC	4.96 LBS
CK50-6T063	0.51-0.63 [12.8-15.9mm]	1.50-4.75 [38-120mm]	5.88 [150mm]	1.38 [35mm]	3.00 [76mm]	0.38 [9.5mm]	1/2-13 UNC	5.34 LBS
CK50-6T075	0.64-0.75 [16.0-19.0mm]	1.50-4.75 [38-120mm]	5.88 [150mm]	1.38 [35mm]	3.00 [76mm]	0.38 [9.5mm]	1/2-13 UNC	5.87 LBS
CK50-6T088	0.76-0.88 [19.1-22.2mm]	1.50-4.75 [38-120mm]	5.88 [150mm]	1.38 [35mm]	3.00 [76mm]	0.38 [9.5mm]	1/2-13 UNC	6.43 LBS
CK50-6T100	0.89-1.00 [22.3-25.4mm]	1.50-4.75 [38-120mm]	5.88 [150mm]	1.38 [35mm]	3.00 [76mm]	0.38 [9.5mm]	1/2-13 UNC	7.13 LBS
CK63-6T025	0.19-0.25 [4.8 - 6.4mm]	2.13-4.00 [54-102mm]	5.88 [150mm]	1.38 [35mm]	4.00 [102mm]	0.50 [12.7mm]	5/8-11 UNC	7.99 LBS
CK63-6T038	0.26-0.38 [6.5 - 9.6mm]	2.13-4.00 [54-102mm]	5.88 [150mm]	1.38 [35mm]	4.00 [102mm]	0.50 [12.7mm]	5/8-11 UNC	8.29 LBS
CK63-6T050	0.39-0.50 [9.7-12.7mm]	2.13-4.00 [54-102mm]	5.88 [150mm]	1.38 [35mm]	4.00 [102mm]	0.50 [12.7mm]	5/8-11 UNC	8.61 LBS
CK63-6T063	0.51-0.63 [12.8-15.9mm]	2.13-4.00 [54-102mm]	5.88 [150mm]	1.38 [35mm]	4.00 [102mm]	0.50 [12.7mm]	5/8-11 UNC	9.11 LBS
CK63-6T075	0.64-0.75 [16.0-19.0mm]	2.13-4.00 [54-102mm]	5.88 [150mm]	1.38 [35mm]	4.00 [102mm]	0.50 [12.7mm]	5/8-11 UNC	9.58 LBS
CK63-6T088	0.76-0.88 [19.1-22.2mm]	2.13-4.00 [54-102mm]	5.88 [150mm]	1.38 [35mm]	4.00 [102mm]	0.50 [12.7mm]	5/8-11 UNC	10.24 LBS
CK63-6T100	0.89-1.00 [22.3-25.4mm]	2.13-4.00 [54-102mm]	5.88 [150mm]	1.38 [35mm]	4.00 [102mm]	0.50 [12.7mm]	5/8-11 UNC	10.91 LBS
CK63-6T112	1.01-1.12 [25.5-28.6mm]	2.13-4.00 [54-102mm]	5.88 [150mm]	1.38 [35mm]	4.12 [104mm]	0.50 [12.7mm]	5/8-11 UNC	11.51 LBS
CK63-6T119	1.13-1.19 [28.7-30.1mm]	2.13-4.00 [54-102mm]	5.88 [150mm]	1.38 [35mm]	4.18 [106mm]	0.50 [12.7mm]	5/8-11 UNC	11.88 LBS
CK63-6T125	1.20-125 [30.2-31.7mm]	2.13-4.00 [54-102mm]	5.88 [150mm]	1.38 [35mm]	4.25 [107mm]	0.50 [12.7mm]	5/8-11 UNC	12.27 LBS
CK63-7T025	0.19-0.25 [4.8 - 6.4mm]	4.00-5.63 [102-143mm]	7.00 [178mm]	1.38 [35mm]	4.00 [102mm]	0.50 [12.7mm]	5/8-11 UNC	9.35 LBS
CK63-7T038	0.26-0.38 [6.5 - 9.6mm]	4.00-5.63 [102-143mm]	7.00 [178mm]	1.38 [35mm]	4.00 [102mm]	0.50 [12.7mm]	5/8-11 UNC	9.69 LBS
CK63-7T050	0.39-0.50 [9.7-12.7mm]	4.00-5.63 [102-143mm]	7.00 [178mm]	1.38 [35mm]	4.00 [102mm]	0.50 [12.7mm]	5/8-11 UNC	10.05 LBS
CK63-7T063	0.51-0.63 [12.8-15.9mm]	4.00-5.63 [102-143mm]	7.00 [178mm]	1.38 [35mm]	4.00 [102mm]	0.50 [12.7mm]	5/8-11 UNC	10.59 LBS
CK63-7T075	0.64-0.75 [16.0-19.0mm]	4.00-5.63 [102-143mm]	7.00 [178mm]	1.38 [35mm]	4.00 [102mm]	0.50 [12.7mm]	5/8-11 UNC	11.16 LBS
CK63-7T088	0.76-0.88 [19.1-22.2mm]	4.00-5.63 [102-143mm]	7.00 [178mm]	1.38 [35mm]	4.00 [102mm]	0.50 [12.7mm]	5/8-11 UNC	11.91 LBS
CK63-7T100	0.89-1.00 [22.3-25.4mm]	4.00-5.63 [102-143mm]	7.00 [178mm]	1.38 [35mm]	4.00 [102mm]	0.50 [12.7mm]	5/8-11 UNC	12.68 LBS
CK63-7T112	1.01-1.12 [25.5-28.6mm]	4.00-5.63 [102-143mm]	7.00 [178mm]	1.38 [35mm]	4.12 [104mm]	0.50 [12.7mm]	5/8-11 UNC	13.21 LBS
CK63-7T119	1.13-1.19 [28.7-30.1mm]	4.00-5.63 [102-143mm]	7.00 [178mm]	1.38 [35mm]	4.18 [106mm]	0.50 [12.7mm]	5/8-11 UNC	13.91 LBS
CK63-7T125	1.20-125 [30.2-31.7mm]	4.00-5.63 [102-143mm]	7.00 [178mm]	1.38 [35mm]	4.25 [107mm]	0.50 [12.7mm]	5/8-11 UNC	14.38 LBS
CK63-9T038	0.26-0.38 [6.5 - 9.6mm]	6.00-7.38 [152-187mm]	9.00 [229mm]	1.38 [35mm]	4.00 [102mm]	0.50 [12.7mm]	5/8-11 UNC	12.13 LBS
CK75-7T038	0.26-0.38 [6.5 - 9.6mm]	2.38-4.88 [61-123mm]	7.00 [178mm]	1.50 [38mm]	4.00 [102mm]	0.63 [15.9mm]	3/4-10 UNC	12.38 LBS
CK75-7T050	0.39-0.50 [9.7-12.7mm]	2.38-4.88 [61-123mm]	7.00 [178mm]	1.50 [38mm]	4.00 [102mm]	0.63 [15.9mm]	3/4-10 UNC	12.74 LBS
CK75-7T063	0.51-0.63 [12.8-15.9mm]	2.38-4.88 [61-123mm]	7.00 [178mm]	1.50 [38mm]	4.00 [102mm]	0.63 [15.9mm]	3/4-10 UNC	13.33 LBS
CK75-7T075	0.64-0.75 [16.0-19.0mm]	2.38-4.88 [61-123mm]	7.00 [178mm]	1.50 [38mm]	4.00 [102mm]	0.63 [15.9mm]	3/4-10 UNC	13.89 LBS
CK75-7T088	0.76-0.88 [19.1-22.2mm]	2.38-4.88 [61-123mm]	7.00 [178mm]	1.50 [38mm]	4.00 [102mm]	0.63 [15.9mm]	3/4-10 UNC	14.68 LBS
CK75-7T100	0.89-1.00 [22.3-25.4mm]	2.38-4.88 [61-123mm]	7.00 [178mm]	1.50 [38mm]	4.00 [102mm]	0.63 [15.9mm]	3/4-10 UNC	15.45 LBS
CK75-7T125	1.20-125 [30.2-31.7mm]	2.38-4.88 [61-123mm]	7.00 [178mm]	1.50 [38mm]	4.25 [107mm]	0.63 [15.9mm]	3/4-10 UNC	17.20 LBS

DRAWINGS FOR PRODUCTION APPROVAL MANUFACTURE WILL NOT BEGIN UNTIL APPROVED DRAWING IS RETURNED TO THERN INC.		COMPANY NAME PRINT NAME SIGNATURE		DATE	
DIMENSIONAL DRAWING		FINISH		RETURN TO:	
BLOCK MOUNTING CLIPS		TREAT		P.O. BOX 147 175 INDUSTRIAL PARK ROAD SHREVEPORT, LA 70506 PHONE 1-504-654-8888 FAX 1-504-642-8822	
TOLERANCES UNLESS OTHERWISE SPECIFIED FRACS & 10" DO NOT SCALE DRAWING		SEE TABLE		PART NO D4526	
THIS PRINT IS THE PROPERTY OF THERN, INC. AND MUST NOT BE REPRODUCED EITHER IN FULL OR IN PART WITHOUT WRITTEN APPROVAL BY THERN, INC.		SCALE N/A		DATE 10/21/2015	